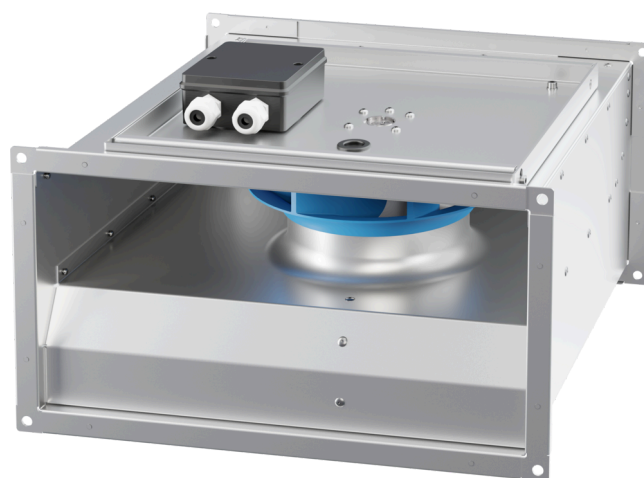


KVR 4020 EC O K 01

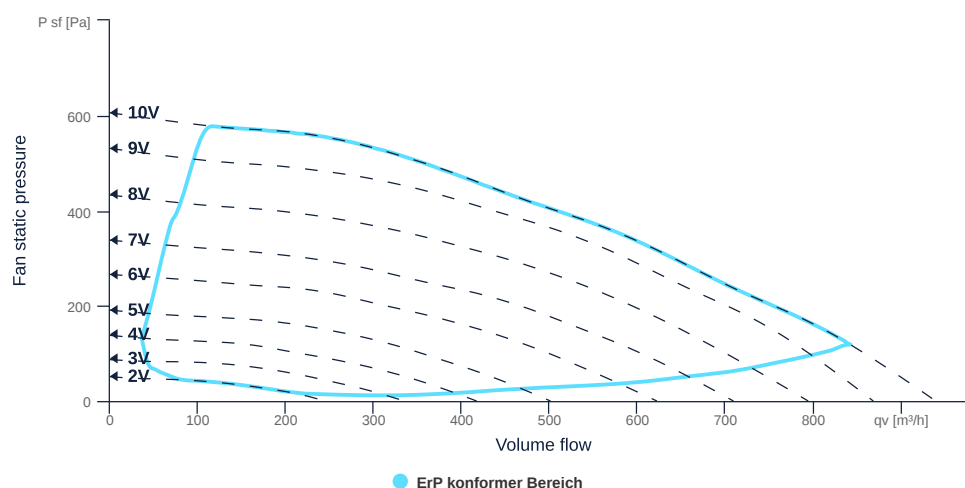
166485

- Backward curved centrifugal impeller
- Removable fan unit
- Housing made of galvanized sheet steel
- High efficiency EC motor, steplessly controllable, external rotor
- Conveyed medium temperature up to 50 °C in continuous operation
- Internal electronic temperature monitoring



FAN CURVES

| Name | Value | Unit |
|-------------|-------|------|
| Volume flow | 0 | m³/h |
| Pressure | 0 | Pa |



to the product detail page

KVR 4020 EC O K 01

166485

GENERAL DATA

| Name | Value | Unit | Formula symbol |
|--|------------------|------|-------------------------|
| Labeling | CE, UKCA | | |
| Duct size | 400x200 | | WxH _{duct} |
| Pipe connection size (DN) | - | | DN |
| Rated voltage (entire device) | 230 | v | U _{rated} |
| Phases (entire device) | 1~ | | phase |
| Electrical protection (entire device) | 6 A | | fuse |
| Housing material | Galvanized steel | | mat _{casing} |
| Impeller material | Plastic | | mat _{impeller} |
| IP-protection class (entire device) | IPX4 | | IP _{compl} |
| IP-Protection class (terminal box) | IP44 | | IP _{ebox} |
| Weight | 9.3 | kg | m |
| Nominal air flow rate, nominal point m ³ /h | 842.4 | CmH | q _{v,nom} |
| Nominal external pressure, static | 119 | Pa | p _{s,nom} |
| Fan type | Radial | | Fan _{type} |
| Category / Installation situation | A | | cat |

ERP DATA (LOT 6)

| Name | Value | Unit | Formula symbol |
|--|---------------------------|------|---------------------|
| Nominal air flow rate, nominal point m ³ /s | 0.23 | CmS | q _{v,nom} |
| Actual electrical input power, nominal point | 0.1 | kw | P _{e,nom} |
| Face velocity, nominal point | 2.92 | mps | v _{nom} |
| Nominal external pressure, static | 119 | Pa | p _{s,nom} |
| static efficiency of the extract fan, nominal point | 27.8 | p | η _{es,EHA} |
| Enclosure sound level, nominal point | 61.61 | db | LWA2 |
| Rating | Product is compliant 2018 | | |



to the product detail page

KVR 4020 EC O K 01

166485

MAXIMAL DATA

| Name | Value | | Unit | Formula symbol |
|---------------------------------|-------|-------|------|-----------------------|
| | 50 Hz | 60 Hz | | |
| Max. power consumption (device) | 107 | 107 | w | P _{ed, max} |
| Max. operating current (device) | 0.9 | 0.9 | A | I _{ed, max} |
| Max. speed | 2930 | 2930 | rpm | n _{max} |
| Max. stat. efficiency | 49.7 | 49.7 | p | η _{es} |
| Max. fan efficiency | 50 | 50 | p | η _e |
| Max. flowrate | 940 | 940 | CmH | q _{v, max} |
| Max. stat pressure | 610 | 610 | Pa | p _{sf, max} |
| Max. medium temperature | 60 | 60 | °C | T _{m, max} |
| Max. environment temperature | 60 | 60 | °C | T _{amb, max} |
| Min. environment temperature | -30 | -30 | °C | T _{amb, min} |

MOTOR DATA

| Name | Value | | Unit | Formula symbol |
|--------------------------|----------|---------------------|------|--------------------------|
| | 50 Hz | 60 Hz | | |
| Rated frequency (device) | | 50 | | f |
| Motor type | | EC | | phase |
| Control type | | stepless-controlled | | ctrltype |
| Installation type | | ORM (Out) | | install |
| Rotation direction | | right | | rotation |
| Isolation class | | ISO F | | ISOclass |
| Motor-protection | | TEC | | protectmotor |
| Protection class | | IP54 | | IP _{motor} |
| Is pole-changeable | | No | | polexch |
| Type of power supply | | AC 1~ | | pwr _{sup} motor |
| Rated voltage | 230 | 230 | v | U _{rated, f1} |
| Rated current | 0.89 | 0.89 | A | I _{rated, f1} |
| Speed | 2908 | 2908 | rpm | n _{f1} |
| Efficiency | 48.7 | 48.7 | p | η _{m, f1} |
| Min. temperature | -30 | -30 | °C | T _{motor, min} |
| Cos Phi | 0.550000 | 0.550000 | | cos φ |
| UL-Certification motor | | None | | UL _{cert} |

SMOKE EXTRACT DATA

| Name | Value | Unit | Formula symbol |
|-----------------------|-------|------|--------------------|
| Fire resistance class | None | | F _{class} |

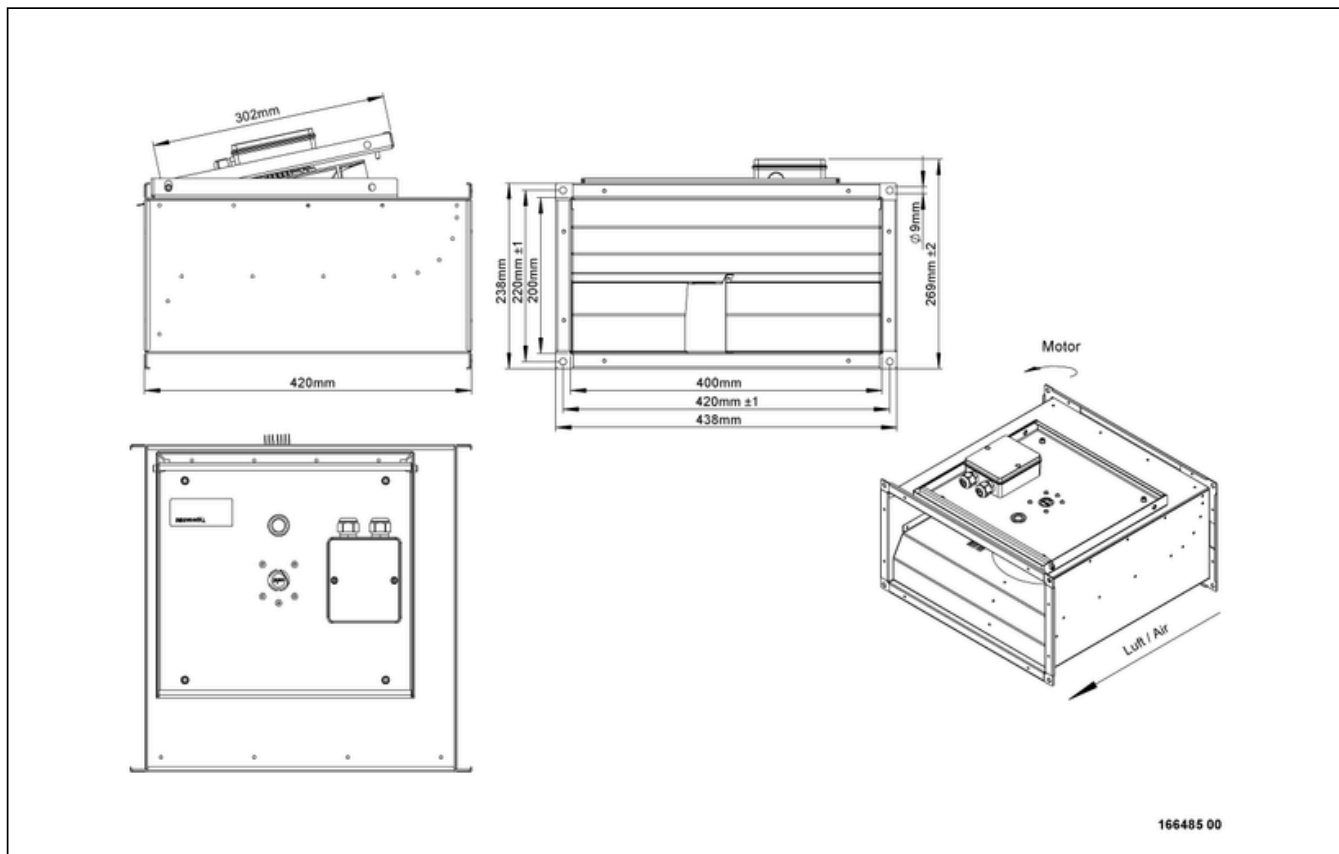


to the product detail page

KVR 4020 EC O K 01

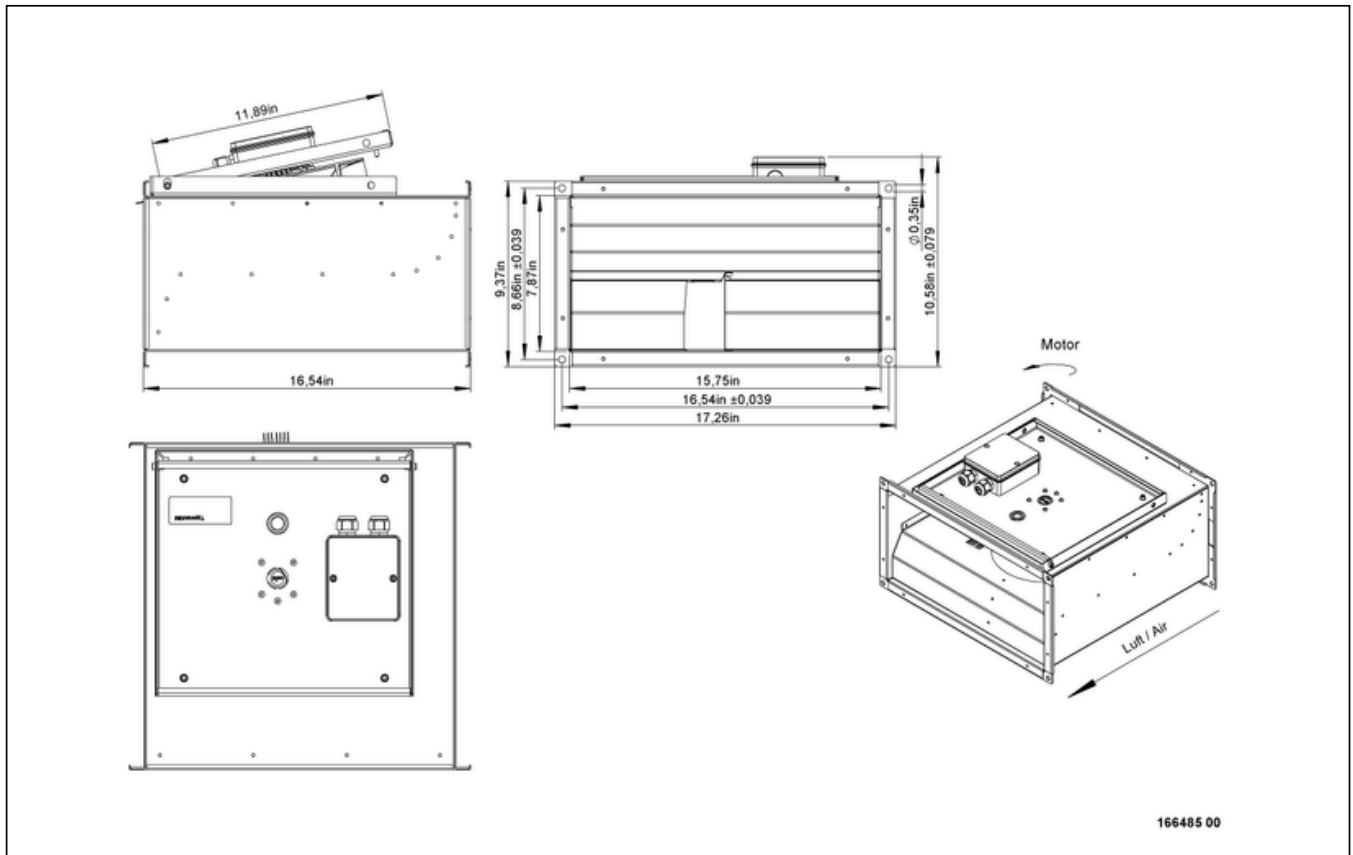
166485

CIRCUIT DIAGRAMS / DIMENSIONAL DRAWINGS



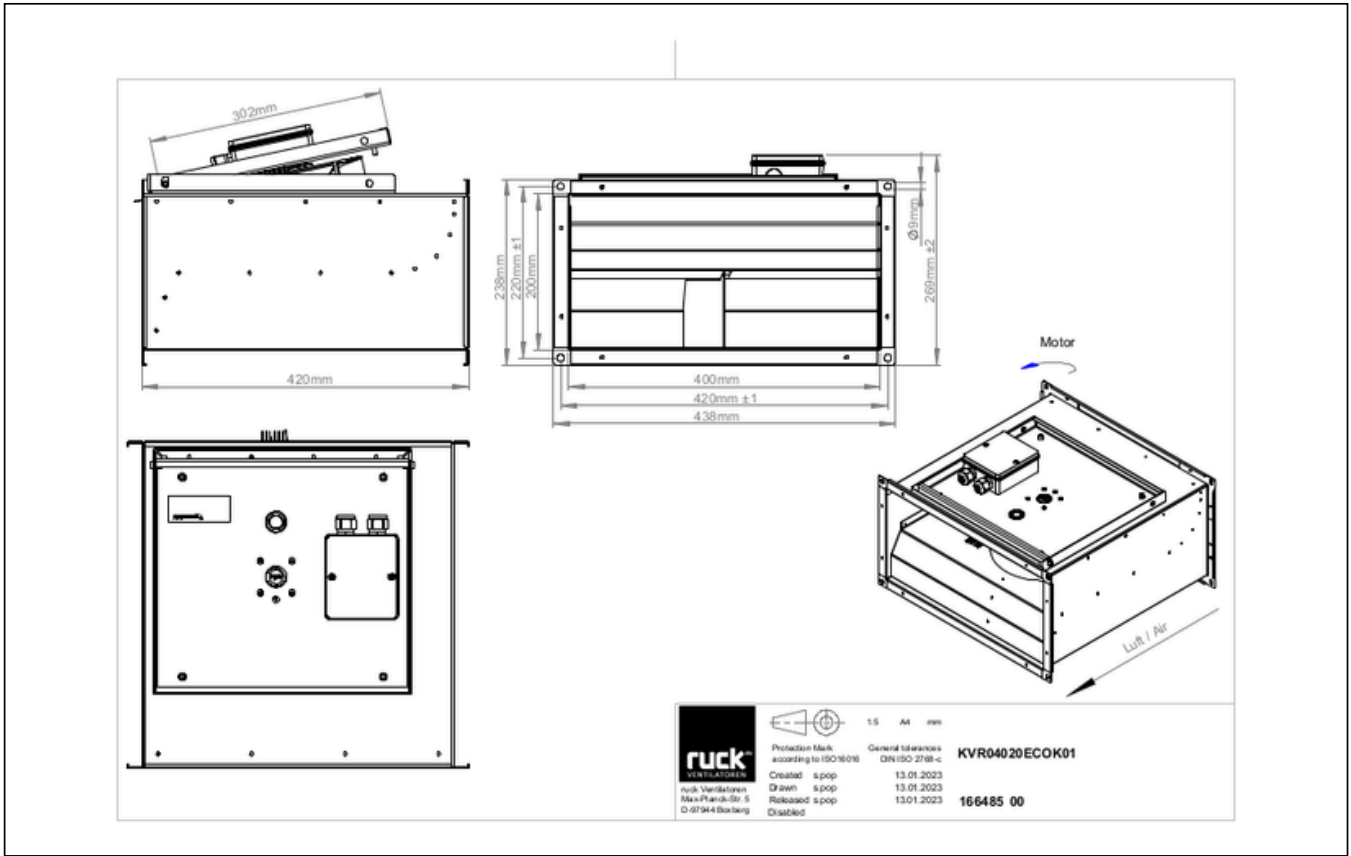
KVR 4020 EC O K 01

166485



KVR 4020 EC O K 01

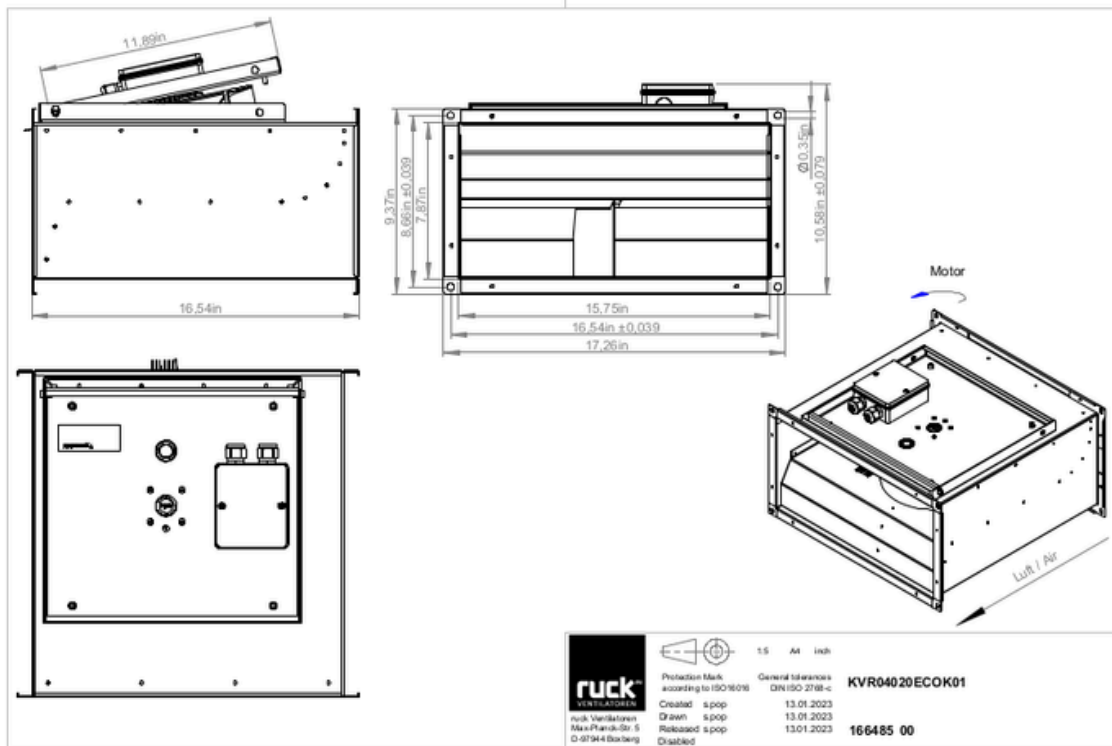
166485



to the product detail page

KVR 4020 EC O K 01

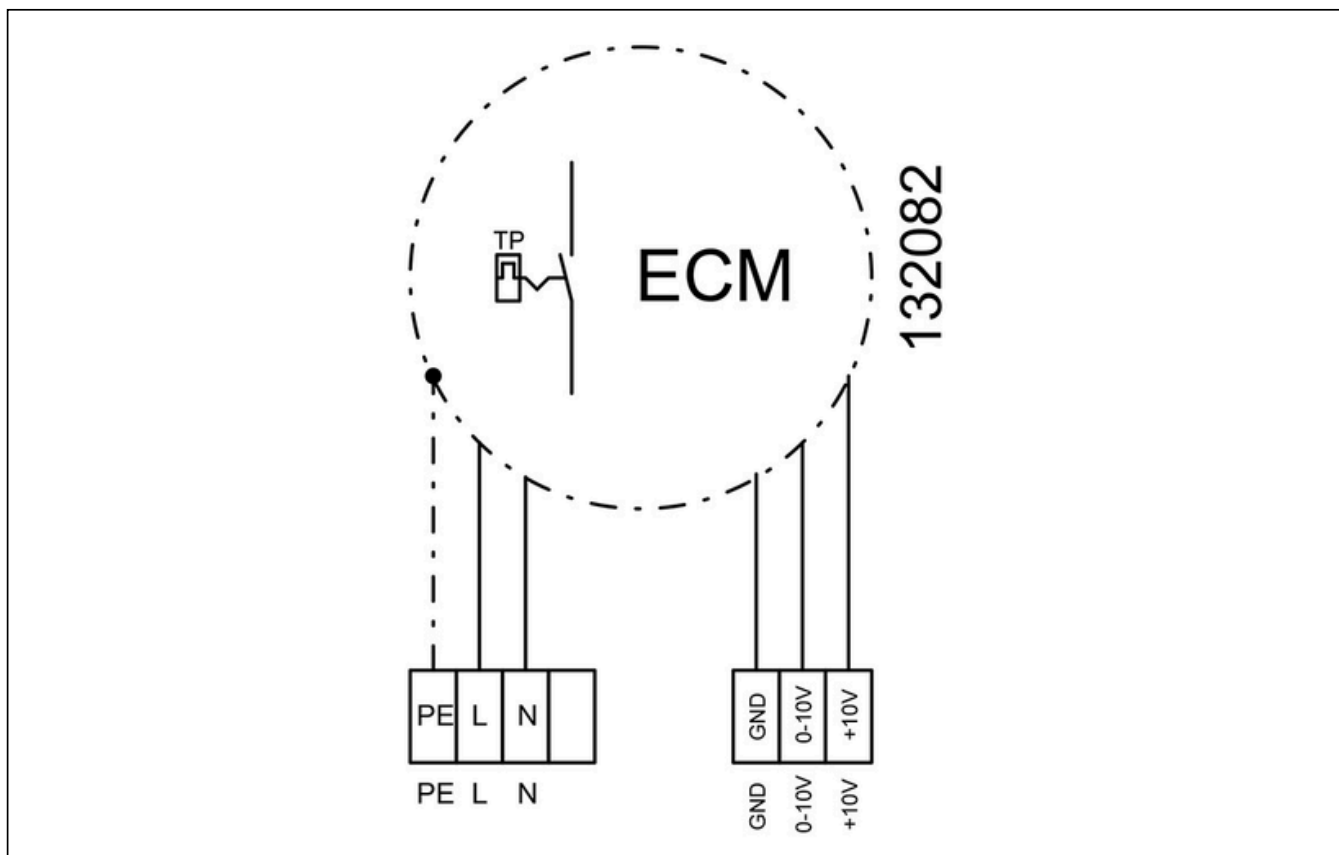
166485



to the product detail page

KVR 4020 EC O K 01

166485



MECHANICAL ACCESSORIES

VS 4020 | 102802



- Duct connector, flexible
- Standard profile flange P20
- Galvanized steel sheet, plastic band (PVC)
- Temperature resistant up to 70 °C

VKK 4020 | 169680



- Automatic shutter
- Plastic, weather resistant
- Temperature resistant up to 70 °C



to the product detail page

KVR 4020 EC O K 01

166485

ELECTRICAL ACCESSORIES

GS 03 | 107633



- Device switch
- $U_{max} = 400\text{ V}$, $I_{max} = 25\text{ A}$
- Switching capacity $400\text{ V } 3\text{-} = 7,5\text{ kW}$
- Protection class IP 55

CON P1000 | 115259



- Constant pressure control
- Actual value display possible via optional control unit
- Output 0-10 V DC + FC enable + setpoint reached
- Pressure setting by means of decade switch

MTP 20 | 128146



- Potentiometer 10 k Ω
- Switching contact 1A/250V AC - 2,5A/12V DC
- Max. ambient temperature 50 °C
- VDE

MTP 30 | 143289



- Stepped potentiometer 10 k Ω
- Step 1 + 2 settable 10 % - 100 % Vdc
- Step 3 100 % Vdc
- Supply voltage +10 Vdc

MTP 40 | 147359



- Potentiometer 10 k Ω
- Connection in terminal box
- Max. ambient temperature 50 °C
- PU: 20 pieces

MTP 50 | 168752



- Potentiometer with multifunction output
- 230 VAC $\pm 10\%$ / 50-60 Hz
- Selectable output: 1-10 VDC / 2-20 mA / 10-100 % PWM
- Min. and max. output value adjustable



to the product detail page